



The Market Analyser

Helpful Tips Guide

INDEX

THE FILE MENU	5
PARAMETERS FEATURE	5
GENERAL	5
Default Exchange.....	5
Auto Log In.....	5
MENU/BUTTONS	6
Edit List.....	6
TABLE SETTINGS	7
Use Default Settings.....	7
Label Font	7
Value Font.....	7
Background Colour.....	7
Column Header Background	7
Row Colours Primary Colour	7
Row Colours Secondary Colour	7
Autosize Columns	8
Draw Selection.....	8
Blush	8
Increase.....	8
Decrease.....	8
Positive Colour	8
Negative Colour.....	8
CHART	9
Show Last Price on Axis.....	9
Scripts on Visible Points Only.....	9
Draw Multiple Trend lines.....	9
Wrap Tool Bar.....	9
Confirm Remove All Indicators.....	9
ORDER MANAGEMENT	10
CUSTOMISE QUICK LAUNCH FEATURE	11
The Automatic Button Management	11
Reset Usage.....	11
THE WINDOWS MENU	12
Always On Top	12
Auto Dock On Maximise	12
Auto Hide	12
Docking	12
Lock Toolbar	12
Close All.....	12
Tile.....	13
Tile Vertically.....	13
Resize Windows.....	14
Title Bar	14
THE HELP MENU	15

LOCATION: MARKET ANALYSER _____ 15

	15
WALKTHROUGHS.....	15
ONLINE MANUAL.....	15
HELP ON CURRENT WINDOW.....	15

THE MAIN MENU _____ 16

QUOTES _____ 16

Sub Menu - Chart _____ 16

Short Cut Access to Trendline.....	16
Drawing Perfectly Horizontal or Vertical Trend Lines.....	16
Positioning Trendlines, Text, Range Tool, Fibonacci & Gann tools exactly at High's and lows.....	16
Re Positioning Trend Line.....	16
Re Angle the Trend Line.....	16
Auto-Extend Trendline.....	16
Duplicate or Delete Trend line.....	16
Draw Multiple Trend Lines.....	16
Ignore the Indicators Properties box.....	16
Change Colour of Chart.....	17
Chart Properties Features (right mouse click on chart).....	17
Display Captions.....	17
Show non trading.....	17
Intra Day Period.....	17
Intra Day Cap.....	17
Intra Day Cap Days.....	18
Daily Cap.....	18
Daily Cap Days.....	18
Display Data Window.....	18
Save Chart – Right Mouse Click.....	18
Save New Template – Right Mouse Click.....	18
Swing Charts.....	18
Customise Tool Bar.....	20
Panning Mode.....	21
Training Mode.....	21
Zoom Out/Zoom In Price Scale.....	21
Reset Price Scale.....	21
Cross Hairs.....	21
Toggling through a watch-list.....	21

THE MAIN MENU _____ 22

QUOTES _____ 22

Sub Menu – Watch-list _____ 22

CUSTOMISING THE LOOK OF YOUR WATCH-LIST _____ 24

To Customise Columns.....	24
Add a comment to a watch-list.....	24
Reposition Columns.....	24
Place stocks in Alpha Order \$ or % Gain/Loss etc.....	24
Copy Complete Watch-list into another watch-list.....	24
Copy a selection of stocks into another watch-list.....	24
Resize Columns.....	25
Auto sizing.....	25
To Auto-Size or Non Auto – Size Watch-list.....	26
Change the Appearance Settings.....	26
Copy data into an Excel Spread Sheet.....	26

Alternate Row Colours.....	27
Change the Column Back Ground / Font Colours.....	27

THE MAIN MENU _____ **28**

TOOLS _____	28
Send an Instant Message.....	28

THE MAIN MENU _____ **30**

TOOLS _____	30
Send a price alert to your mobile phone.....	30

ADDITIONAL UNIVERSAL FEATURES _____ **31**

Drag and Drop _____	31
----------------------------	-----------

Data Linking _____	31
---------------------------	-----------

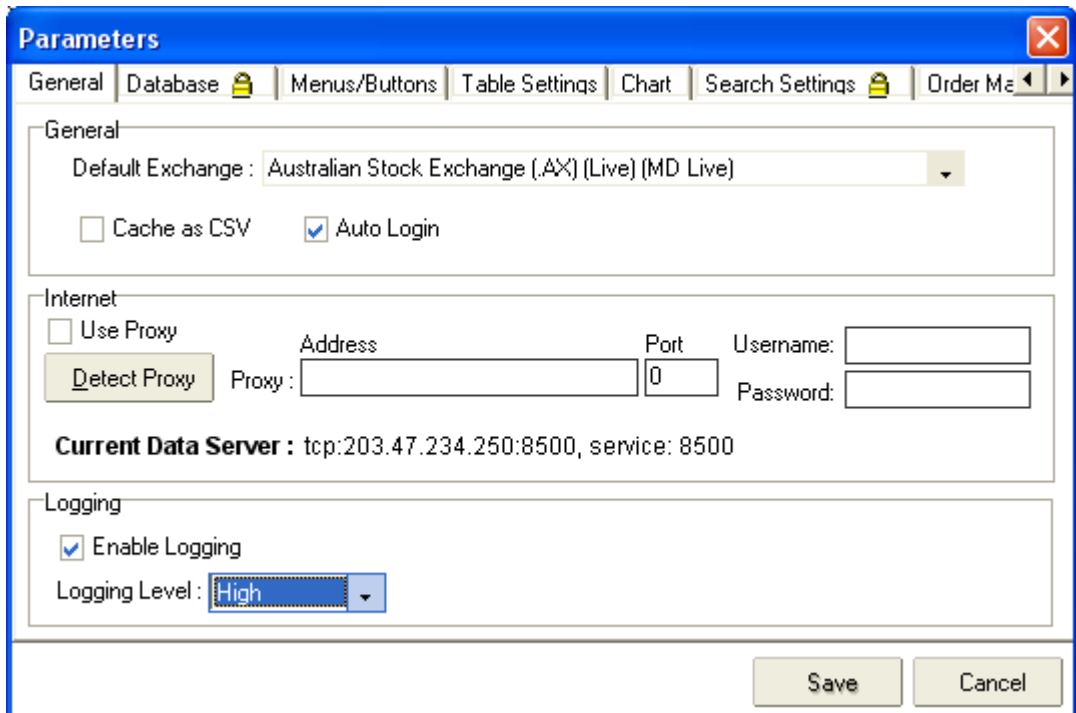
The File Menu

Location: Market Analyser Title Bar



Under the menu heading file you will find two areas of interest.

PARAMETERS FEATURE



GENERAL

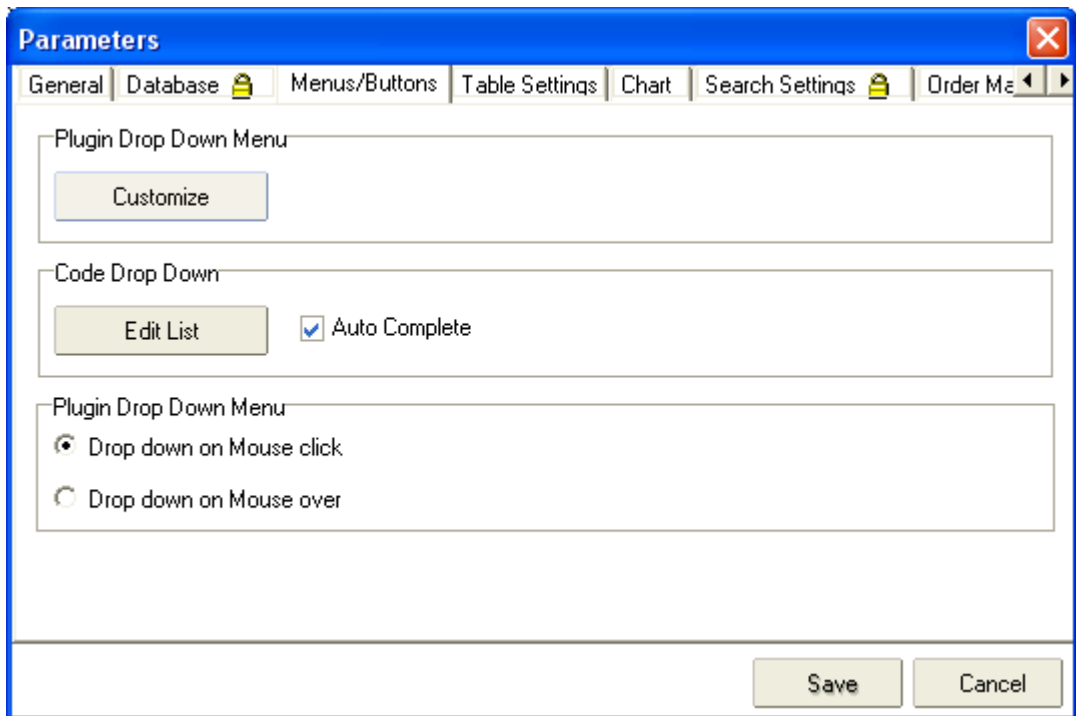
Default Exchange

- Allows you to choose which exchange. For example if your default exchange was NYSE then if you typed in BHP in the code box it would automatically come up with BHP.N.

Auto Log In

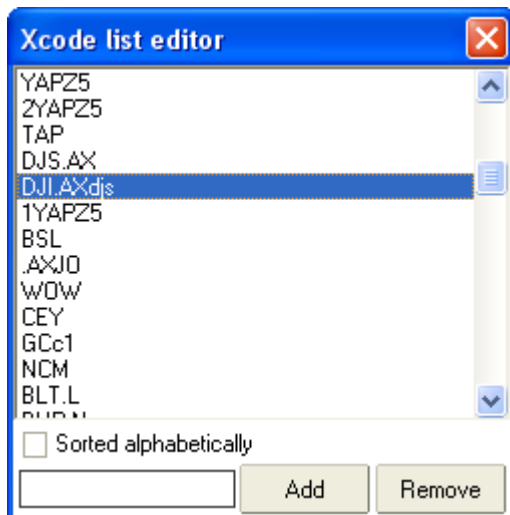
- You can also Tick or Un-tick the Auto Log In Feature. By unticking this feature you will need to type your user name and password in each time you log in.

MENU/BUTTONS



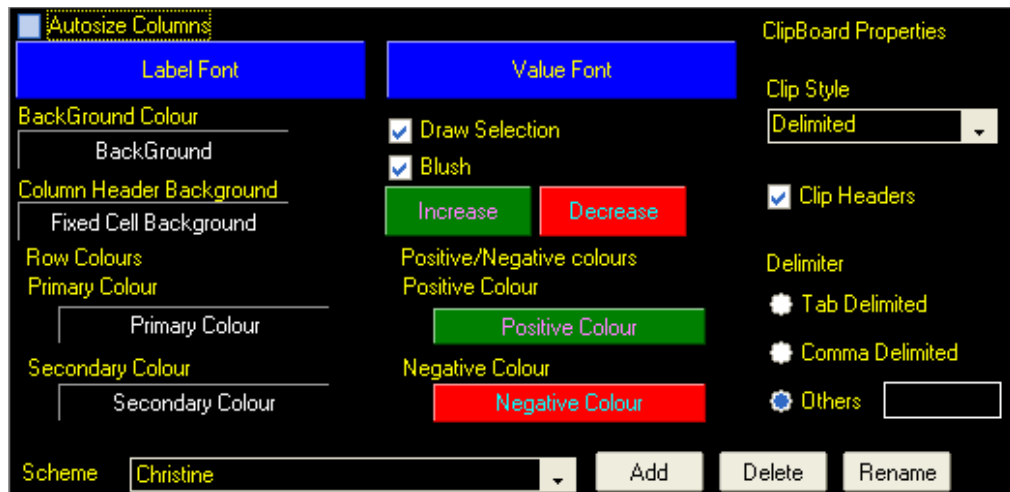
Edit List

- If you have typed a code incorrectly in the Code Box this is where you can delete and add correct codes. Click on the Edit List and ADD and REMOVE unwanted or incorrect codes



You can also chose to utilise a Mouse Click to drop a menu down, or a Mouse Over which means you will not need to click.

TABLE SETTINGS



In this feature you change the entire appearance of Market Analyser except the charts which can be changed in the Chart Properties on the chart. Refer below. You can add different schemes by clicking on the ADD button and creating a new look.

Use Default Settings

This is a master control that determines whether the table being looked at follows the master Table Settings values, or whether they are independently set for the particular table being looked at.

Label Font

Allows the user to select a font and its size and description, to be used for any labels (not values) in the table.

Value Font

Allows the user to select a font and its size and description, to be used for any values (not labels) in the table.

Background Colour

The colour of background area in the table.

Column Header Background

The colour of column headers in the table.

Row Colours|Primary Colour

The background colour of every second row in the table. Setting Primary Colour and Secondary Colour to different colours stripes the table, making it easier to follow rows of data across. Setting Primary Colour and Secondary Colour to the same colour removes the striping. (examples are further below)

Row Colours|Secondary Colour

The background colour of every alternate second row in the table. Setting Primary Colour and Secondary Colour to different colours stripes the table, making it easier to follow rows of data across. Setting Primary Colour and Secondary Colour to the same colour removes the striping.

Autosize Columns

If selected, this function sets column widths according to the width of the data in the columns. It makes a best fit guess.

Draw Selection

Sets whether or not an area of the table selected with the mouse remains highlighted. If Draw Selection is un-ticked, the highlighted area will simply receive a dotted outline.

Blush

Sets whether or not a value in the table that has gone up will get (for a few seconds) a different background colour: that colour set in Increase. Similarly, Blush sets whether or not a value in the table that has gone down will get (for a few seconds) a different background colour: that colour set in Decrease.

Increase

Sets the colour which indicates that a value has increased. See Blush above.

Decrease

Sets the colour which indicates that a value has decreased. See Blush above.

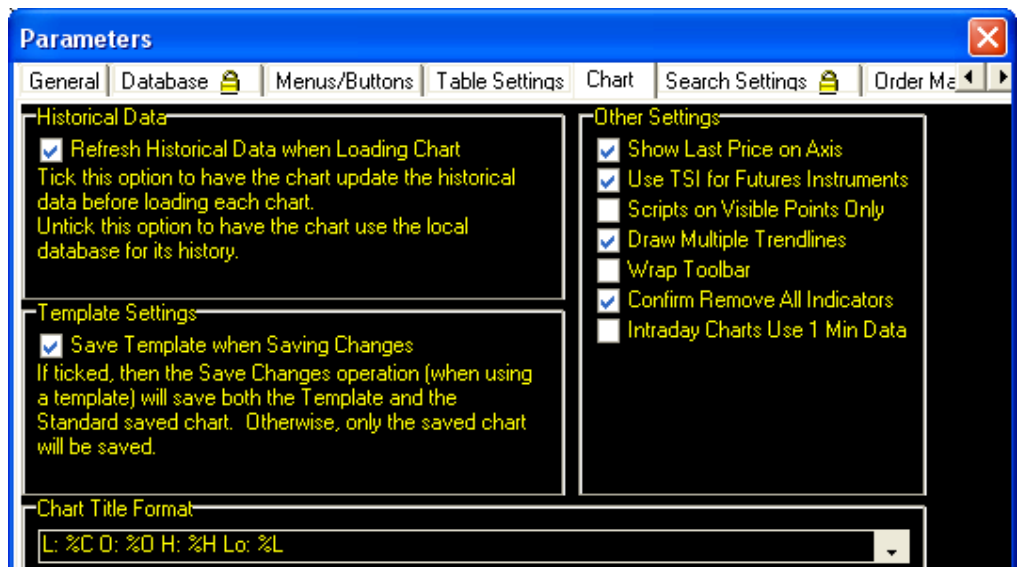
Positive Colour

Certain selected columns display values with different colours depending on whether they are positive or negative values. Sets the colour assigned to positive values for these columns.

Negative Colour

Certain selected columns display values with different colours depending on whether they are positive or negative values. Sets the colour assigned to negative values for these columns.

CHART



This is the area where you can set Market Analyser to do such things as:

Show Last Price on Axis

- A handy tool that will show you the last price on the right hand Axis on your Charts. It is recommended you leave this ticked

Scripts on Visible Points Only

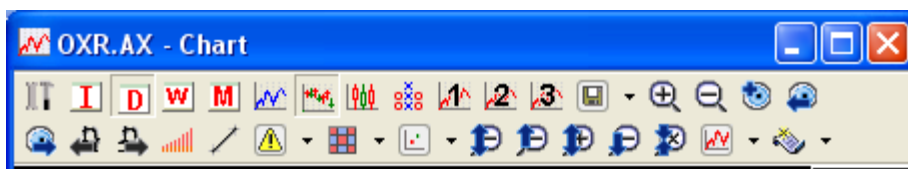
- If using scripted indicators this option can be utilised to make loading faster by only calculating values that are visible on the screen. For example if you are only looking at six months of data on your screen the scripts will only be visible. If you zoom your chart in to view 3 years data you will need to refresh you chart by hitting enter to view further scripts

Draw Multiple Trend lines

- Another handy tool which allows you to draw multiple trend lines without having to continually click on the Trend Line Icon. Right mouse clicking will turn the feature off on the charts

Wrap Tool Bar

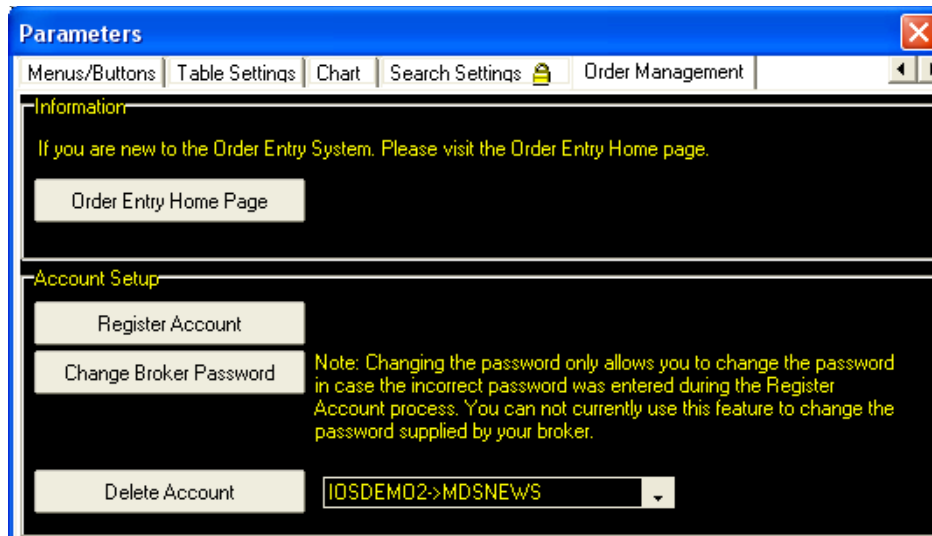
- Allows the tool bar to wrap around so you can view each icon which is particularly handy if you tile your windows.



Confirm Remove All Indicators

- A recommended item to keep ticked. If you accidentally right mouse click on a chart and click remove all indicators this feature will prompt you to confirm if you wish to do this or not.

ORDER MANAGEMENT



If you have set up an account with one of our brokers to trade online via the Market Analyser this is where you set the program which will provide you access to the **BUY/SELL** feature on the Market Analyser Title Bar

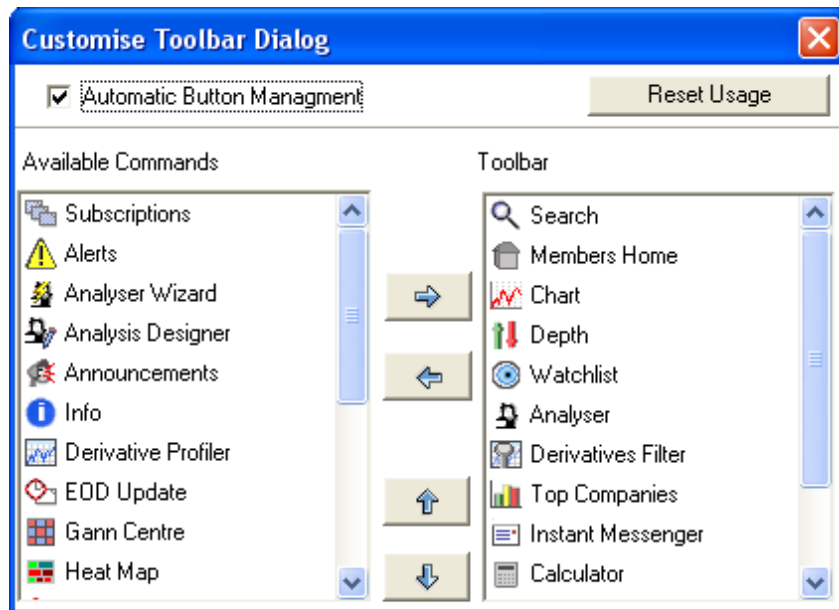
The File Menu

Location: Market Analyser Title Bar



Under the menu heading file you will find two areas of interest.

CUSTOMISE QUICK LAUNCH FEATURE



In this feature by clicking on the icon in the Available Commands list and clicking the arrow > you can add your favourite icons to your main Market Analyser Title Bar. You can remove items by clicking on the Tool Bar Icons and using the arrow < to remove them.

The Automatic Button Management

- By ticking this feature the most used icons will be placed first on your title bar tool bar

Reset Usage

- Resets the usage back to a zero value

The Windows Menu



Always On Top

- Allows the application bar to always stay on top of all other windows, both within the program and outside it.

Auto Dock On Maximise

- Sets the application bar to automatically dock to the top of the screen when the maximise button (the middle button of the three small buttons at the upper right of any window) is clicked.

Auto Hide

- Sets the application bar to automatically slide out of view when the mouse is not over it. If the application bar is docked at the top of the screen, you can find it again by moving the mouse to a position at the top of the screen, and the application bar will slide down into view. If the application bar is docked at the bottom of the screen, you can find it again by moving the mouse to a position at the bottom of the screen, and the application bar will slide up into view.

Docking

- Forces the application bar to be attached to the top of the screen, or to the bottom of the screen, or to simply float anywhere on the screen as other windows do. These options are called "Dock to Top"; "Float" and "Dock to Bottom".

Lock Toolbar

- This prevents accidental re-design of the contents of the application bar, by locking objects on it so they cannot be dragged.



The above example shows that the open windows are hidden. You will need to do the following to rectify this:

- Click Windows
- Take the tick OFF Lock Tool Bar
- Move your mouse to the far right hand side until a double sided arrow appears
- Click hold and drag the windows back into position
- Click Windows
- Place a tick ON Lock Tool Bar

Close All

- This feature will close all open windows which saves closing them individually

Market Analyser Helpful Tips Guide

Tile

- You can tile your windows. If you wish to utilise this feature, ensure that you have the required windows open and then click on Tile. If you have 10 windows open, then 10 windows will tile.



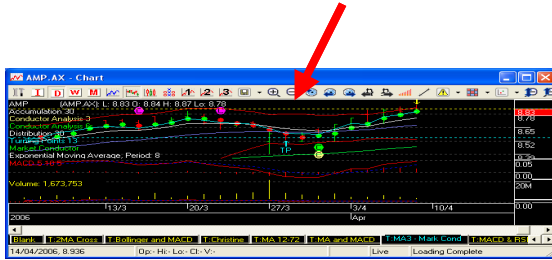
Tile Vertically



Resize Windows

- You can resize each window manually by placing your mouse in the corner or side of each window and clicking and dragging.

Maximise the window by using the middle MAXIMISE button on the window



Restore the window back into its position within the tiles by using the middle RESTORE button on the window



Title Bar

The Help Menu

Location: Market Analyser



WALKTHROUGHS

In this area you will find over 20 different videos of each feature of the program ranging in duration from 3 to 15 minutes

ONLINE MANUAL

The manual will provide you with explanations of the indicators that we have available on the program

HELP ON CURRENT WINDOW

Will provide you with comprehensive information on the window's features

The Main Menu

QUOTES

Sub Menu - Chart

Short Cut Access to Trendline

- CTRL T and draw

Drawing Perfectly Horizontal or Vertical Trend Lines

- Hold the SHIFT KEY DOWN and click on the Trend Line Icon
- Click Draw and Click into position, repeat process. When no longer required right mouse click

Positioning Trendlines, Text, Range Tool, Fibonacci & Gann tools exactly at High's and lows

- Click the Tool then hold the ALT down and draw/click

Re Positioning Trend Line

- Click into the middle of the trend line with your mouse pointer on the edge to reposition with the same angle

Re Angle the Trend Line

- Click onto the very end of the trend line and hold your mouse down and move to re-angle

Auto-Extend Trendline

- right mouse click over the trend line and click on Trend Line Properties – Tick Auto Extend

Duplicate or Delete Trend line

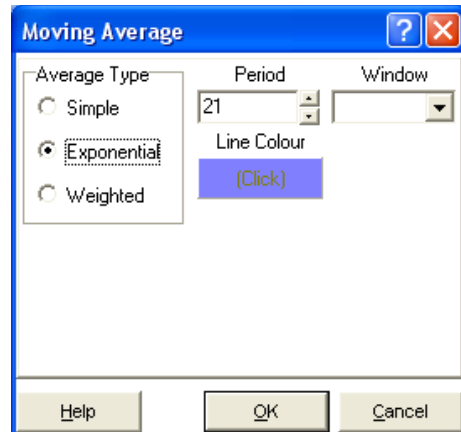
- Right Mouse click over trend line

Draw Multiple Trend Lines

- Ensure you have ticked this feature under File – Parameters and Chart. This will allow you to click – draw – click – draw etc

Ignore the Indicators Properties box

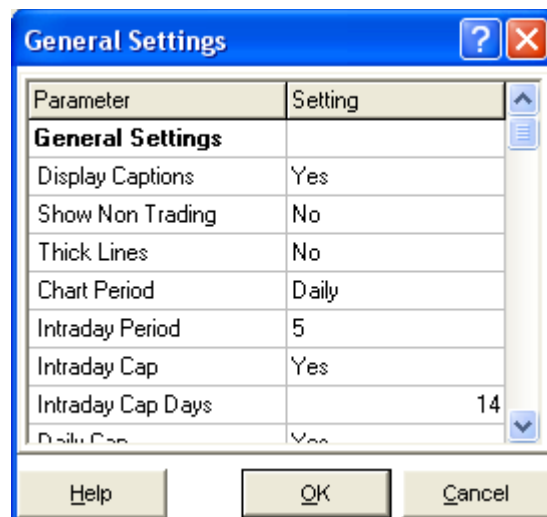
- Hold the shift key and click on the feature. EG Hold Shift Key down and click on Bollinger Bands. The properties box where you can change the parameters will not appear. The Bollinger Bands will be automatically overlaid
This box will NOT appear. The indicator will be automatically placed on your chart



Change Colour of Chart

- Right Mouse Click
- Click Chart Properties
- Scroll to Colour Settings

Chart Properties Features (right mouse click on chart)



Display Captions

- (Provides a list of all indicators placed on chart in the top left hand corner)

Show non trading

- Choose YES if you wish to view all calendar days
- Choose NO if you only wish to view trading days

Intra Day Period

- Change the intra day period to as low as 1 Minute. You can chose any time period you want

Intra Day Cap

- Choose NO if you wish to view as much history as possible
- Choose YES if you wish to limit the period you wish to view

Intra Day Cap Days

- If you chose YES in Intra Day Cap , you need to choose the period

Daily Cap

- Same as above

Daily Cap Days

- Same as above

Display Data Window

- Will display a small data window that will stay on your chart window



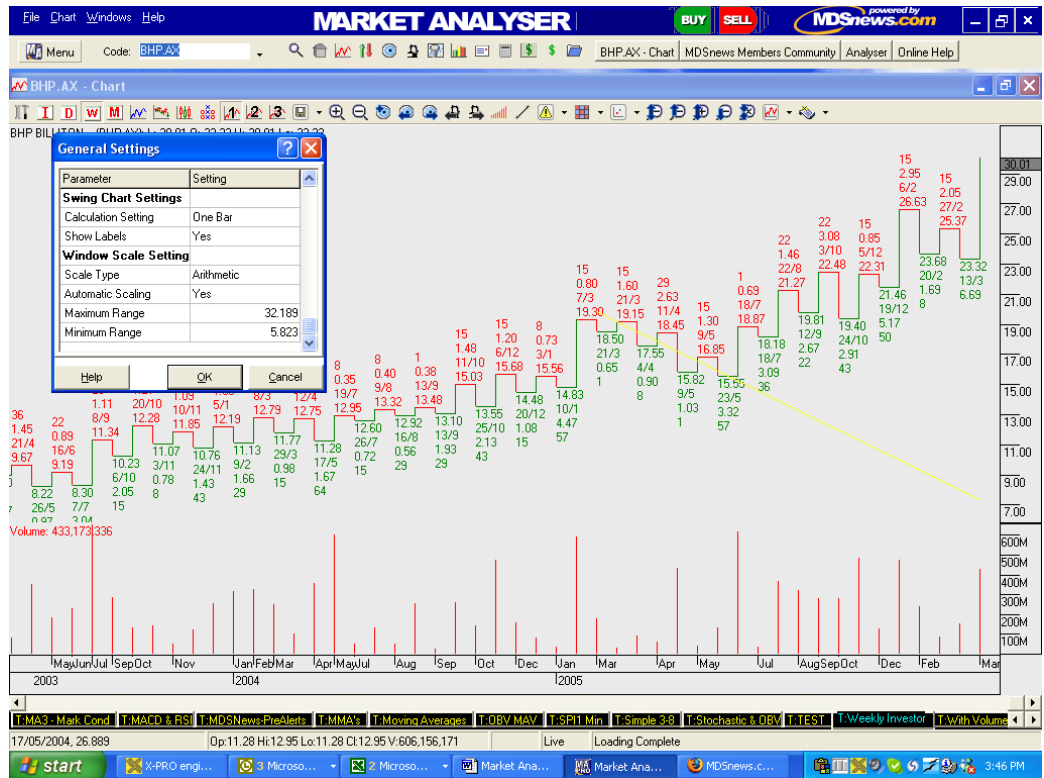
Save Chart – Right Mouse Click

- A saved Chart holds all the content of the chart including indicators, trendlines, textboxes and the XCODE the chart is portraying. It is intended as a snapshot of that particular XCODE, and saving it allows you to look at it later when more data has come in. This is especially useful with trendlines: it is possible to place a trendline on a chart, save it as a Chart, and then check regularly whether the price has moved in accordance with the expectations implied by the trendline

Save New Template – Right Mouse Click

- The alternative method of saving a created chart is to save as a Template. This will save only the content of the chart that is unrelated to price and time, including indicators but not including trendlines or textboxes, and not including the XCODE. The Template can then be applied to other XCODEs. You can set up your favourite ways to view stocks, save it as a Template, and use it to page through [Watch-lists](#), [Portfolios](#) or [Analyser](#) scan results.

Swing Charts

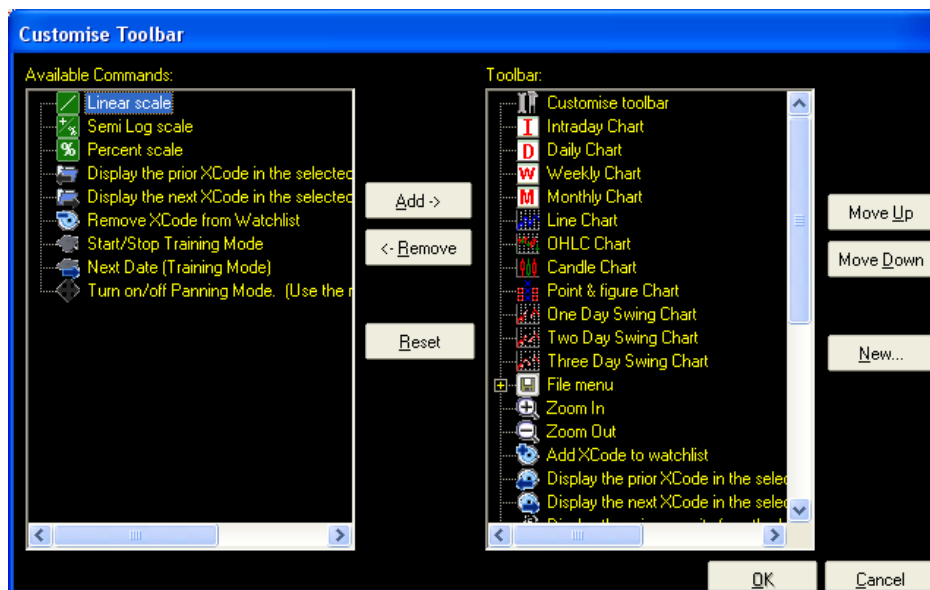


- For those that don't want the data

Right mouse click and go to Chart Properties. Scroll to the bottom and change the SHOW LABELS to a NO instead of a YES

Customise Tool Bar

- Right Mouse click



Here you can add and remove Icons to or from your chart tool bar. You can also reposition them on the tool bar by using the Move Up and Move Down Feature to the right.

Panning Mode

- By holding your middle mouse down you can move re position the chart. Turn the panning mode on and off by using the Maltese cross icon

Training Mode

- Allows you to go back to a date in time to evaluate your skills at identify potential entries and exits

Zoom Out/Zoom In Price Scale

- Zooms in and out the price scale of the main chart along with zooming out the upper or lower price scale

Reset Price Scale

- Use this to reset the chart

Cross Hairs

- Right Mouse - click – hold and move

Toggling through a watch-list

- Most important to right mouse click and click select watch-list
Then utilise these icons to toggle back and forth



Toggling through an Analyser Scan

- Utilise these icons to view the results from a Scan

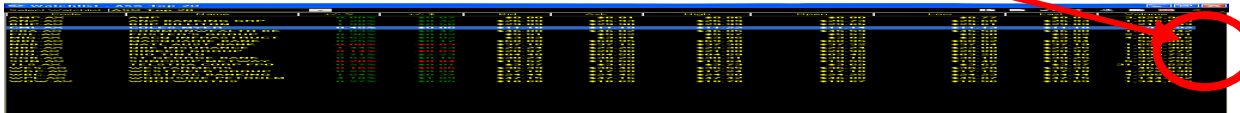


The Main Menu

QUOTES

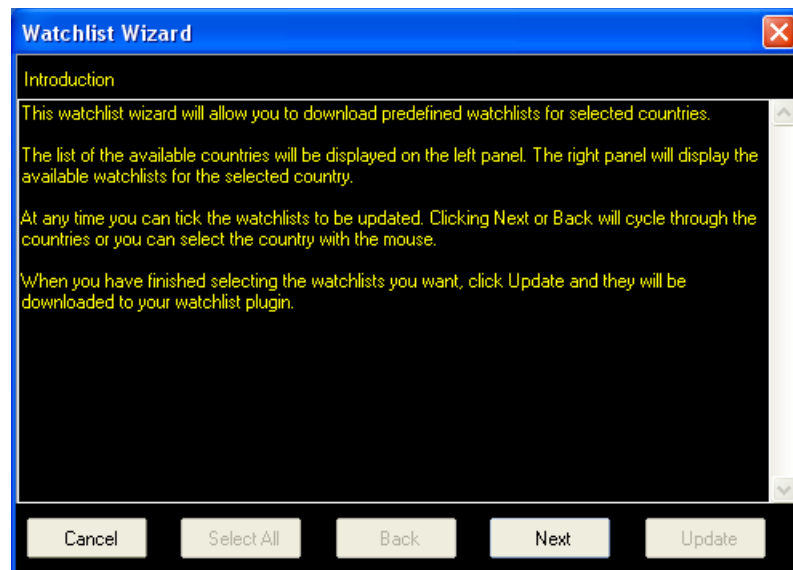
Sub Menu – Watch-list

When you commenced using Market Analyser you may have pre populated one of our pre defined watch-lists. If you need to return to the Watch-list Wizard you can utilise the Wizard Icon



OR

Click on Watch-list on the Top Title Bar and click Watch-list Wizard



Click Next – Choose your Country and then tick the selected Watch-list.

Market Analyser Helpful Tips Guide

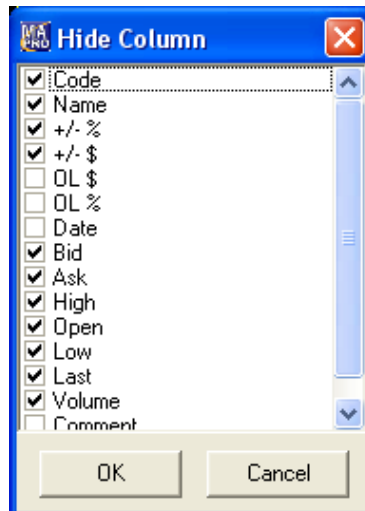
Then click update. This watch-list will then be placed in your main watch-list menu.

Code	%	+/- \$	Bid	Ask	High	Open	Low	Last	Volume
ASX Top 20	0.57%	\$0.05	\$8.78	\$8.79	\$8.86	\$8.80	\$8.77	\$8.79	3,912,946
ASX Top 100	1.20%	\$0.32	\$26.92	\$26.93	\$26.99	\$26.73	\$26.68	\$26.93	1,866,104
ANZ.AX	2.01%	\$0.59	\$29.90	\$29.91	\$29.99	\$29.65	\$29.61	\$29.90	9,369,742
BHP.AX	0.54%	\$0.06	\$11.18	\$11.19	\$11.22	\$11.14	\$11.13	\$11.19	3,300,883
CML.AX	1.10%	\$0.50	\$46.02	\$46.03	\$46.05	\$45.59	\$45.58	\$46.03	1,422,740
CBA.AX	0.36%	\$0.02	\$5.51	\$5.52	\$5.57	\$5.53	\$5.50	\$5.52	2,501,261
FGL.AX	0.26%	\$0.01	\$3.83	\$3.84	\$3.85	\$3.83	\$3.82	\$3.83	5,043,635
MIG.AX	0.26%	\$0.18	\$68.93	\$68.97	\$69.40	\$68.95	\$68.62	\$68.95	534,726
MBL.AX	-0.16%	-\$0.06	\$37.15	\$37.16	\$37.38	\$37.32	\$37.04	\$37.16	1,680,098
NAB.AX	1.40%	\$0.32	\$23.24	\$23.25	\$23.30	\$23.24	\$23.00	\$23.24	1,664,388
RIN.AX	-0.14%	-\$0.03	\$20.96	\$20.97	\$21.00	\$20.98	\$20.88	\$20.97	1,468,300
RIO.AX	2.74%	\$2.25	\$84.49	\$84.55	\$84.69	\$83.45	\$83.20	\$84.50	1,998,011
SGB.AX	0.53%	\$0.16	\$30.24	\$30.25	\$30.31	\$30.10	\$30.10	\$30.25	1,934,105
SUN.AX	-0.15%	-\$0.03	\$19.58	\$19.60	\$19.64	\$19.55	\$19.46	\$19.58	5,391,448
TLS.AX	0.00%	\$0.00	\$3.65	\$3.66	\$3.73	\$3.69	\$3.66	\$3.66	32,278,899
WES.AX	-0.14%	-\$0.05	\$36.39	\$36.41	\$36.55	\$36.48	\$36.28	\$36.40	483,185
WDC.AX	0.29%	\$0.05	\$17.19	\$17.20	\$17.24	\$17.18	\$17.15	\$17.19	4,604,399
WBC.AX	1.58%	\$0.38	\$24.44	\$24.45	\$24.50	\$24.25	\$24.23	\$24.45	4,430,028
WPL.AX	4.07%	\$1.84	\$47.11	\$47.13	\$47.42	\$46.00	\$45.87	\$47.10	1,159,725
WOW.AX	0.27%	\$0.05	\$18.69	\$18.70	\$18.70	\$18.67	\$18.56	\$18.69	1,355,230

CUSTOMISING THE LOOK OF YOUR WATCH-LIST

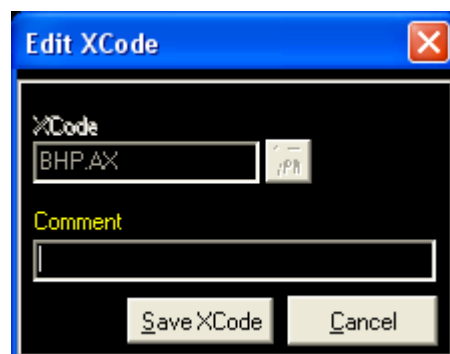
To Customise Columns

- Right mouse click and choose select columns.
Place a tick on or off the selected features you wish to view on your watch-list



Add a comment to a watch-list

- *(You cannot add / delete or edit a watch-list that is generated from an Index's constituents for example ASX TOP 20/50/100 etc.)*
Ensure you have ticked "Comment" in the Select Column Feature
Right Mouse Click over the stock you wish to add a comment to and select Edit.
Add your comment and click Save X Code.



Reposition Columns

- Click and hold and move on the Column Heading

Place stocks in Alpha Order \$ or % Gain/Loss etc

- Click once on the column heading for eg NAME or CODE

Copy Complete Watch-list into another watch-list

- Right mouse click and click COPY
- Open up the second watch-list and right mouse click & Paste

Copy a selection of stocks into another watch-list

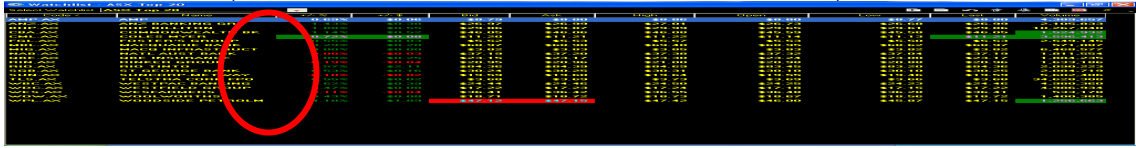
- Click hold and drag over your selection. Right mouse click and click COPY

Market Analyser Helpful Tips Guide

- Open second watch-list and right mouse click & PASTE

Resize Columns

- Place your mouse between the column dividers until you see a double sided arrow.



Auto sizing

- For those that have tiled windows you may need to utilise this feature to ensure that you can always view the most important information on your watch-list.

For example you can choose a tiled Watch-list to look like this:

Code <	Name	+/- %	+/- \$
AMP.AX	AMP	0.46%	\$0.04
ANZ.AX	ANZ BANKING GRP	1.62%	\$0.43
BHP.AX	BHP BILLITON	2.15%	\$0.63
CBA.AX	COMMONWEALTH BK	1.21%	\$0.55
CML.AX	COLES MYER	0.81%	\$0.09
FGL.AX	FOSTER'S GROUP	0.55%	\$0.03
MBL.AX	MACQUARIE BANK	0.39%	\$0.27
MIG.AX	MACQ INFRASTRUCT	0.00%	\$0.00
NAB.AX	NATL AUST BANK	-0.13%	-\$0.05
QBE.AX	QBE INSURANCE	0.92%	\$0.21
RIN.AX	RINKER GROUP	-0.19%	-\$0.04
RIO.AX	RIO TINTO	2.72%	\$2.24
SGB.AX	ST GEORGE BANK	0.53%	\$0.16
SUN.AX	SUNCORP-METWAY	-0.10%	-\$0.02
TLS.AX	TELSTRA CORP FPO	0.82%	\$0.03
WBC.AX	WESTPAC BANKING	1.62%	\$0.39
WDC.AX	WESTFIELD GROUP	0.53%	\$0.09

Or like this:

Code	Name	+/- %	+/- \$	Bid	Ask	High	Open	Low	Last	olum
AM...	AMP	0...	\$...	\$...	\$...	\$8...	\$8...	\$8.77	\$...	4...
AN...	ANZ B...	1...	\$...	\$...	\$...	\$2...	\$26...	\$26...	\$...	2...
BH...	BHP B...	2...	\$...	\$...	\$...	\$2...	\$29...	\$29...	\$...	1...
CB...	COMM...	1...	\$...	\$...	\$...	\$4...	\$45...	\$45...	\$...	1...
CM...	COLE...	0...	\$...	\$...	\$...	\$1...	\$11...	\$11...	\$...	3...
FG...	FOST...	0...	\$...	\$...	\$...	\$5...	\$5...	\$5.50	\$...	2...
MB...	MACQ...	0...	\$...	\$...	\$...	\$6...	\$68...	\$68...	\$...	5...
MI...	MACQ...	0...	\$...	\$...	\$...	\$3...	\$3...	\$3.82	\$...	6...
NA...	NATL...	...	\$...	\$...	\$...	\$3...	\$37...	\$37...	\$...	1...
QB...	QBE I...	0...	\$...	\$...	\$...	\$2...	\$23...	\$23...	\$...	1...
RI...	RINK...	...	\$...	\$...	\$...	\$2...	\$20...	\$20...	\$...	1...
RI...	RIO T...	2...	\$...	\$...	\$...	\$8...	\$83...	\$83...	\$...	2...
SG...	ST GE...	0...	\$...	\$...	\$...	\$3...	\$30...	\$30...	\$...	2...
SU...	SUNC...	...	\$...	\$...	\$...	\$1...	\$19...	\$19...	\$...	5...
TL...	TELS...	0...	\$...	\$...	\$...	\$3...	\$3...	\$3.66	\$...	3...
W...	WEST...	1...	\$...	\$...	\$...	\$2...	\$24...	\$24...	\$...	5...
W...	WEST...	0...	\$...	\$...	\$...	\$1...	\$17...	\$17...	\$...	5...
W...	WESF...	...	\$...	\$...	\$...	\$3...	\$36...	\$36...	\$...	5...

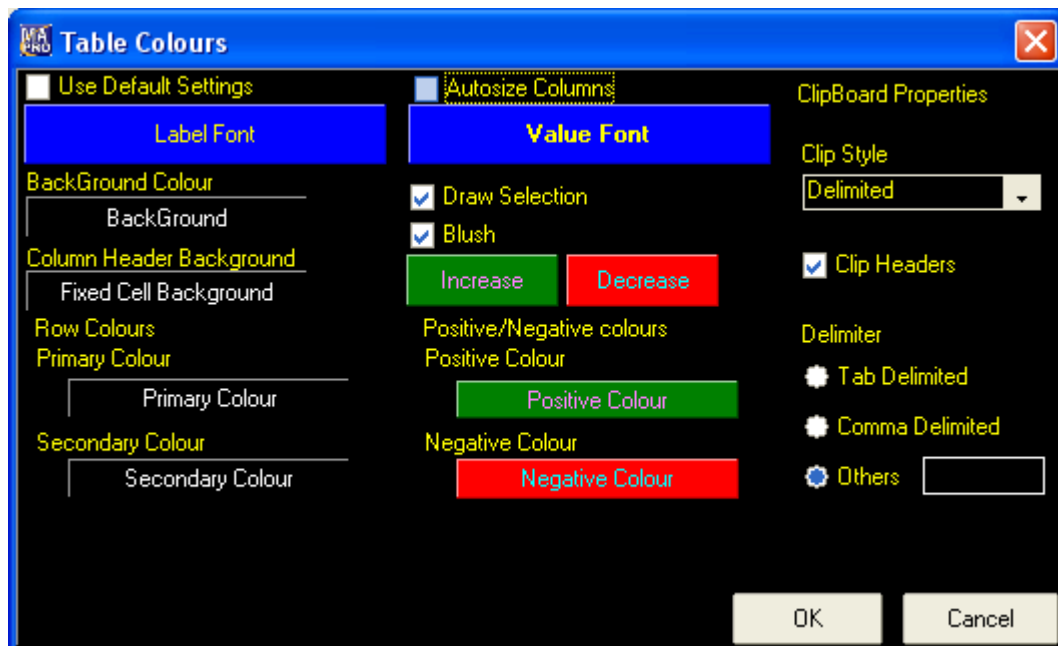
The second one can be a little hard to follow.

To Auto-Size or Non Auto – Size Watch-list

- Right Mouse Click – Click Appearance Settings – Take the Tick off or place a tick in Auto Size Columns

Change the Appearance Settings

- Right Mouse Click – Click Appearance Settings un-tick the Use Default Settings



Copy data into an Excel Spread Sheet

- Right Mouse Click – COPY TABLE
- Open an Excel Spread Sheet and right mouse click – PASTE.

MOST OF THE ABOVE SHORT CUTS CAN BE UTILISED IN MANY FEATURES OF THE MARKET ANALYSER.

Right mouse click in your favourite window to find the additional features available

Alternate Row Colours

- A handy feature for some such as the following:

Code	Name	% Ch	±1 \$	Bid	Ask	High	Open	Low	Last	Volume
ABC.AX	ADELAIDE BRIGHTN	-2.93%	-\$0.08	\$2.59	\$2.60	\$2.68	\$2.68	\$2.56	\$2.60	543
ABS.AX	ABC LEARNING CTR	0.38%	\$0.03	\$7.97	\$7.98	\$8.04	\$8.00	\$7.95	\$7.98	328
ADB.AX	ADELAIDE BANK	-0.23%	-\$0.03	\$13.06	\$13.11	\$13.18	\$13.15	\$13.01	\$13.06	76
ADZ.AX	ADSTEAM MARINE	-1.46%	-\$0.03	\$2.02	\$2.04	\$2.07	\$2.07	\$2.02	\$2.02	993
AGL.AX	AUST GAS LIGHT	-0.81%	-\$0.15	\$18.45	\$18.49	\$18.55	\$18.45	\$18.36	\$18.45	756
AHCA.AX	ALINTA INFRA-PP	1.09%	\$0.02	\$1.86	\$1.865	\$1.87	\$1.835	\$1.835	\$1.86	426
AIK.AX	AUS INFRAST FUND	0.00%	\$0.00	\$2.24	\$2.25	\$2.28	\$2.24	\$2.23	\$2.25	997
ALL.AX	ARISTOCRAT LEIS	-1.11%	-\$0.16	\$14.31	\$14.33	\$14.63	\$14.63	\$14.22	\$14.31	601
ALN.AX	ALINTA	-1.59%	-\$0.18	\$11.11	\$11.12	\$11.38	\$11.38	\$11.11	\$11.11	563
ALS.AX	ALESCO CORP	-1.24%	-\$0.12	\$9.58	\$9.59	\$9.71	\$9.71	\$9.56	\$9.59	296
ALZ.AX	AUSTRALAND PROP	0.97%	\$0.02	\$2.09	\$2.10	\$2.10	\$2.10	\$2.07	\$2.09	395
AMC.AX	AMCOR	-1.51%	-\$0.11	\$7.19	\$7.20	\$7.33	\$7.30	\$7.19	\$7.19	2,638
AMP.AX	AMP	0.69%	\$0.06	\$8.78	\$8.80	\$8.86	\$8.80	\$8.77	\$8.80	4,882
ANN.AX	ANSELL	0.68%	\$0.08	\$11.74	\$11.76	\$11.85	\$11.72	\$11.65	\$11.77	383
ANZ.AX	ANZ BANKING GRP	1.43%	\$0.38	\$26.98	\$26.99	\$27.12	\$26.73	\$26.68	\$26.99	2,345
APA.AX	AUST PIPELINE	-0.23%	-\$0.01	\$4.26	\$4.27	\$4.38	\$4.38	\$4.20	\$4.26	120
APL.AX	AUST PHARMACEUT	2.01%	\$0.05	\$2.53	\$2.55	\$2.54	\$2.53	\$2.51	\$2.54	299
APN.AX	APN NEWS & MEDIA	1.25%	\$0.06	\$4.86	\$4.87	\$4.92	\$4.87	\$4.84	\$4.87	371
ADP.AX	AQUARIUS PLATINM	-2.22%	-\$0.44	\$19.37	\$19.40	\$19.80	\$19.80	\$19.31	\$19.40	116
ARQ.AX	ARC ENERGY	2.62%	\$0.04	\$1.565	\$1.57	\$1.57	\$1.54	\$1.54	\$1.565	809
ASX.AX	AUST STOCK EXCH	2.60%	\$0.84	\$33.11	\$33.12	\$33.15	\$32.70	\$32.40	\$33.11	697
AWB.AX	AWB	-1.02%	-\$0.04	\$3.90	\$3.91	\$3.96	\$3.94	\$3.89	\$3.90	836
AWC.AX	ALUMINA	2.32%	\$0.18	\$7.93	\$7.94	\$7.96	\$7.96	\$7.85	\$7.93	6,445
AWF.AX	AUS WORLDWIDE EX	1.90%	\$0.05	\$2.67	\$2.68	\$2.68	\$2.68	\$2.66	\$2.68	698
ASA.AX	ASA ASIA PACIFIC	3.50%	\$0.21	\$6.20	\$6.21	\$6.21	\$6.11	\$6.08	\$6.21	983
BBG.AX	BILLABONG INTL	0.06%	\$0.01	\$15.75	\$15.77	\$15.87	\$15.84	\$15.70	\$15.76	59
BBL.AX	B&B INER GROUP	-0.62%	-\$0.01	\$1.565	\$1.57	\$1.59	\$1.59	\$1.56	\$1.57	2,667
BRW.AX	BARCDOCK & BROWN	-1.71%	-\$0.03	\$1.715	\$1.73	\$1.76	\$1.76	\$1.71	\$1.72	680
BEA.AX	BAYCORP ADVANTAG	-0.30%	-\$0.01	\$3.30	\$3.31	\$3.35	\$3.31	\$3.29	\$3.30	311

Change the Primary Row Colour to Grey
Change the Secondary Row colour to White

Change the Column Back Ground / Font Colours

- Right Mouse Click and Column Colours. Choose your selection

The Main Menu

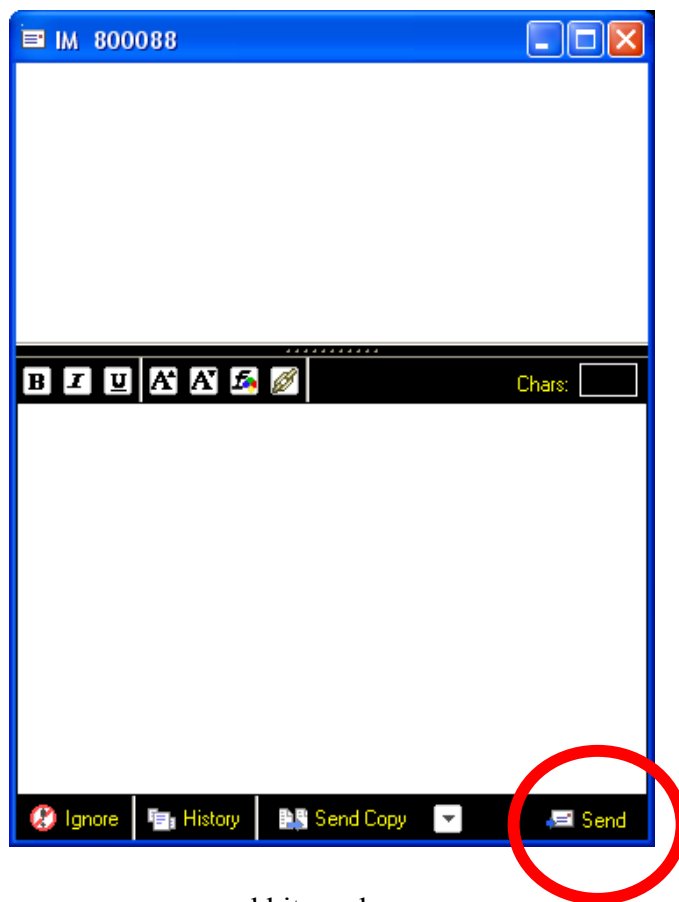
TOOLS

Sub Menu – Instant Message

Send an Instant Message


- Type the @ key and the members operator code or user name in the code box and hit enter (You must know the members code or user name MDS does not provide a list of these)

EG: @maryjones or @123456



- Simply type your message and hit send
You can also send a copy, view history messages or choose to ignore an incoming message.

You can also access the menu for Instant Messages under Menu – Tools and Instant Message. Simply double click on an operator name and the above window will also appear.



The Main Menu

TOOLS

Sub Menu – Alerts

Send a price alert to your mobile phone

This is a handy feature for those with mobile phone capable of receiving emails. If you are unsure you will need to check with your mobile phone provider.

- Open the Alerts window and right mouse click
- Click Add Alert

The screenshot shows the 'Alert Management' dialog box. It has a blue title bar with the text 'Alert Management' and a close button (X). The dialog is divided into two main sections: 'Alert Code' and 'Alert Condition'. In the 'Alert Code' section, there are two checked checkboxes: 'Enable Alert' and 'Run On Server'. The 'XCode' field contains the text 'BHP.AX'. In the 'Alert Condition' section, the 'If' dropdown menu is set to 'Last', the 'is' dropdown menu is set to '>=', and the 'this value' field contains the text '31.00'. The 'then' dropdown menu is set to 'Send Email' and the 'Address' field contains the text 'christine.fox@mdsnews.com'. At the bottom right of the dialog, there are two buttons: 'Ok' and 'Cancel'.

- Ensure the Enable Alert and Run on Server are ticked
- Set the Alert Condition
- Use the drop down menu to chose “send email”
- Place the email address in the address section
- Click ok.

Additional Universal Features

Drag and Drop

With almost any window it is possible to drag a XCODE from one window to another by holding down the CTRL key on your keyboard and using your mouse.

For example, if both a Chart and Watch-list are open, then, whilst holding your control key, click and hold your mouse button on an XCODE or just part of the row. Move your mouse, whilst still holding the CTRL key and mouse button to the chart window then release your mouse button and CTRL key. (Release the Mouse Button first). The chart will then load from that code from your watch-list.

As stated above, this drag and drop functionality will work between almost any window. (You can even drag from a chart into a watch-list)



Data Linking

Another way of linking windows together is to use the Data Link option. When most windows are open and selected, there will be an additional menu option in the Application Bar, with the name of that window. One of the options in that menu is the Data Link option. Selecting the Data Link option in various windows will ensure that they all display the same XCODE, no matter how it's selected. (i.e. Dragging an XCODE to a data link window will load that same XCODE in the other data linked windows. Entering a XCODE into the Code box of the Application Bar will load that XCODE into each data linked window. Selecting a row in a watch-list, with it's data link enabled, will then load the XCODE from that row into the other windows that have their data link options enabled too.)

For example:

Below is an example of a tiled set up.

Market Analyser Helpful Tips Guide

In order to data link you need to click into each window and then use the top title bar and tick data link

The screenshot displays the Market Analyser Pro software interface. The main window shows a candlestick chart for BHP BILLITON (BHP.AX) with various technical indicators like MACD, Exponential Moving Average, and Volume. A red arrow points to the 'Data Link' option in the 'Customise Toolbar' menu, which is circled in red. The watchlist on the left shows a list of stocks, and the bottom right shows a table of market depth data.

Level	Buyers	Bid Qty	Bid Price	Ask Price	Ask Qty	St
1	2	241,839	\$30.75	\$30.78	5,000	
2	2	11,942	\$30.74	\$30.79	6,000	
3	5	41,976	\$30.70	\$30.80	32,900	
4	2	14,739	\$30.69	\$30.82	330	
5	1	1,000	\$30.68	\$30.83	10,360	
6	2	1,134	\$30.66	\$30.84	9,928	
7	1	350	\$30.65	\$30.85	35,138	
8	1	1,160	\$30.64	\$30.86	15,100	

If you click in a stock in your watch-list it will automatically change the other windows to the same XCODE.



Are you using The Market Analyser Professional with our unique Pre Alert Indicators?

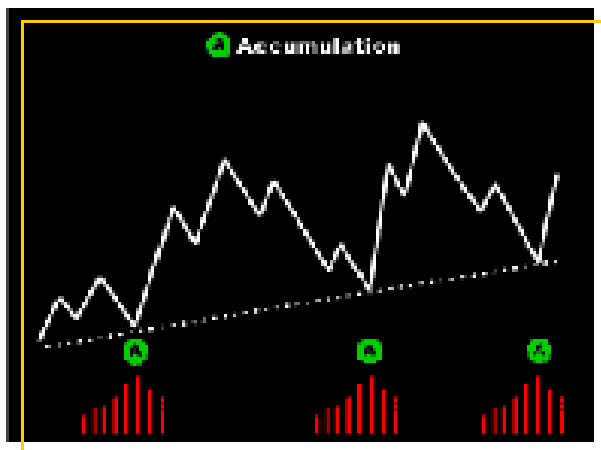
Telephone our Membership Department

1800 096239

Special packages available to upgrade now.

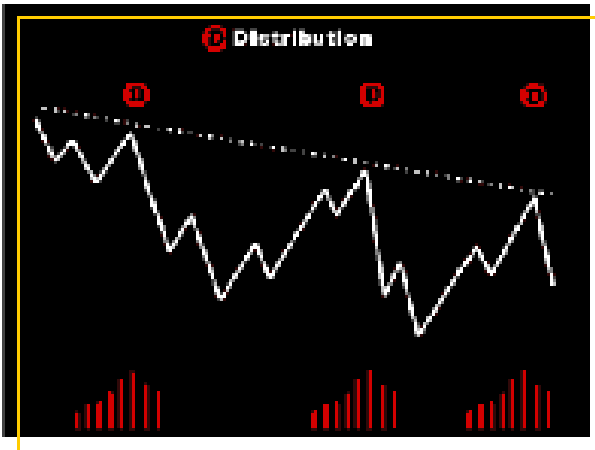
MDSnews Pre-Alert Trading Technology

The MDSnews Pre-Alert Indicators are based on a unique pattern-recognition concept that has proven to be one of the most effective charting and [analysis tools](#) available. The Pre-Alert Indicators are designed to help alert you to trading opportunities prior to conventional charting indicators and therefore give you a greater chance of profiting from market trends.



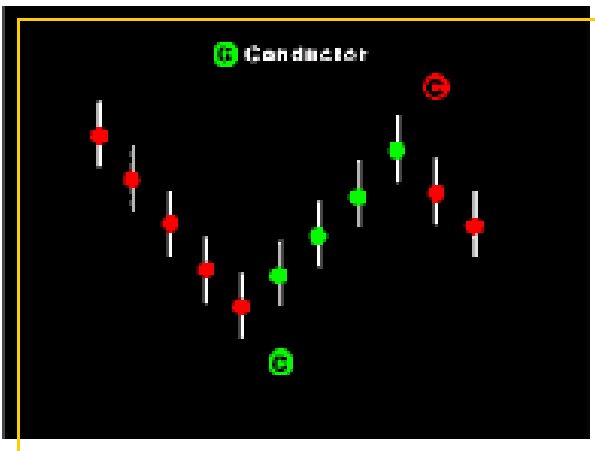
Accumulation Pre-Alert

With the broad underlying trend of global equity markets being bullish, the Accumulation Indicator is designed to detect increased buying activity in stocks that are trading at a discounted value. Due to the nature of the signal, looking for short-term sell-offs that are then met with unusually high volume, the indicator is most successful in periods of market strength and will often identify appropriate entry points at price troughs or positive long-term reversal points. Across a 5 year period the Accumulation Indicator has a success range of 60% to 72% of the time on the ASX top 20 stocks.



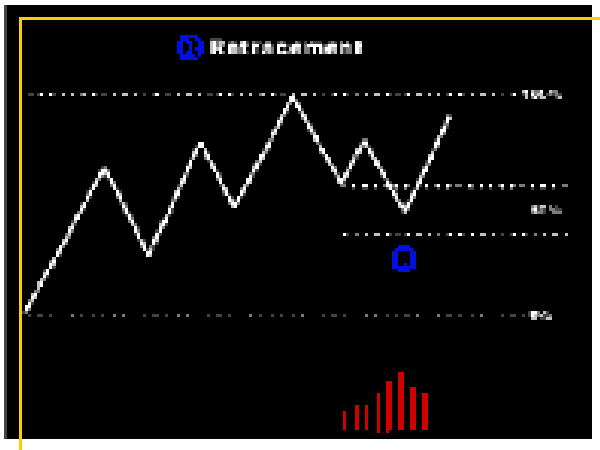
Distribution Pre-Alert

The Distribution Indicator is essentially looking for periods in a share price where a relatively sharp breakout move has occurred with significant volume taking place. With this in mind, the indicator can be applied to both rising and falling markets with equally high levels of success. In a down-trending market, peaks which are met with high volume can often lead to reversal points and a continuation of the downtrend. In rising markets the Distribution Pre-Alert can be used as a breakout alert, as the volume increase identified by the signal is often a result of the price action taking out short term resistance levels.



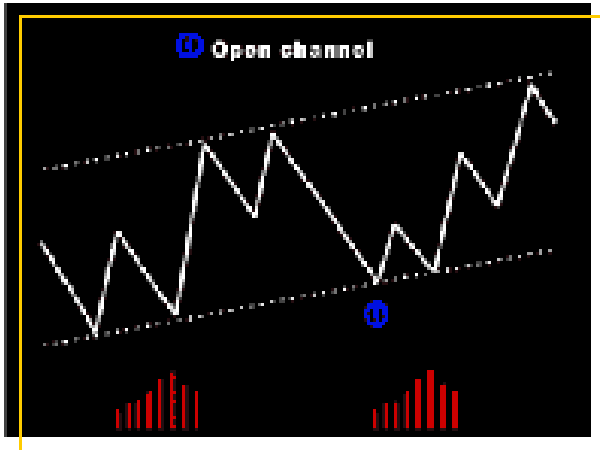
Conductor Pre-Alert

The Conductor has been designed as a short-term trend reversal filter. The Indicator can be used on various settings to help you pinpoint the ideal entry or exit date in any stock. NOW PROVEN over five years, the Conductor Indicator has been independently tested in combination with the MACD and has achieved an average return of 20%.



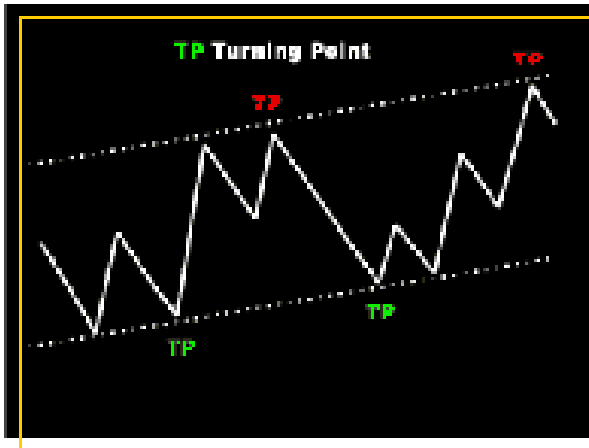
Retracement Pre-Alert

The Retracement Indicator is one of the most powerful indicators available. All experienced traders understand that the market moves in cycles and most often when a stock is in a strong up trend it will find renewed buying at 50% of its prior move. It is at these levels that the smart money comes back into the market. The Retracement Indicator assists you with scanning the market to find these opportunities.



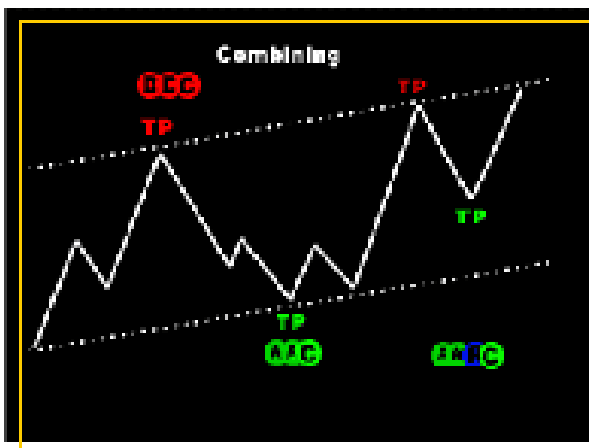
Open Channel Pre-Alert

The Open Channel Indicator is designed to alert you to stocks that are trading at the bottom end of their trading range. Often shares will oscillate between support and resistance. The Open Channel Indicator is designed to detect these trading ranges and alert you once the price is showing signs of bouncing off the lower level.



Turning Point Pre-Alert

The Turning Point Indicator helps a trader to locate likely reversals within a stock, and is a great visual tool that helps remove the guesswork in support and resistance positioning.



A Combination of Pre-Alerts

Pre-Alerts are even more powerful when combined and utilised as part of an overall trading strategy, as each Pre-Alert Indicator helps assist in supporting alerts from the others. This method of trading aims to assist you in building a much clearer picture when reading the charts. There is no question that the Pre-Alerts are a superior way of assisting you to trade the market. If you are relying on industry standard indicators alone, you risk leaving your money on the table.